

# Surveyor Installation Guide

Objective Imaging Ltd.

## 1 Minimum & Recommended PC Specifications

---

The Surveyor application is Windows-only software. It is designed to manage system resources very effectively, as a result the minimum PC requirements are relatively low whilst allowing large scale mosaic images to be acquired.

Minimum PC requirements:

- Dual core Intel/AMD processor & compatible motherboard.
- 2GB RAM.
- Windows XP 32-bit, Windows Vista/7/8/10 32/64-bit.
- 250GB SATA 7200rpm 8mb cache hard disk.
- Oasis Controller PCI/PCI-express card, or
- Oasis Glide stage with in-built controller and hi-speed USB 2.0 port.
- Appropriate high-speed camera port eg. firewire 800 PCI-card connector, or USB3 connector (see individual camera manufacturer for further details).

Recommended PC requirements:

- Modern Intel processor & compatible motherboard.
- 8GB RAM.
- SSD drive.
- Windows 7 and above.

## 2 Prerequisite Installations

---

Successful Surveyor installation requires the system hardware to be installed and configured prior to execution. This is typically performed by the **systems integrator or dealer** who should be contacted in event of a problem. This hardware setup includes:

- OASIS hardware controller and driver.
- Third-party hardware and drivers (eg. camera, filter wheel, microscope driver etc).

It is recommended that all third-party hardware is verified **fully operational** using the manufacturer-provided application software, prior to Surveyor installation.

Camera devices should be installed prior to Surveyor, in order to allow the installation process to register the appropriate camera driver. Failure to do so may require Surveyor to be reinstalled.

**Administrator-level** user account control is required to install Surveyor on Windows 7/8/10. Please consult your onsite IT administration to ensure this is feasible.

The OASIS and Surveyor installations can be download from the Objective Imaging website [www.objectiveimaging.com](http://www.objectiveimaging.com).

Third-party software and drivers should be obtained from the manufacturer directly.

### 3 Installation Procedure

3.1 Double-click the icon to execute the intended installation of Surveyor, as shown in Figure 1.

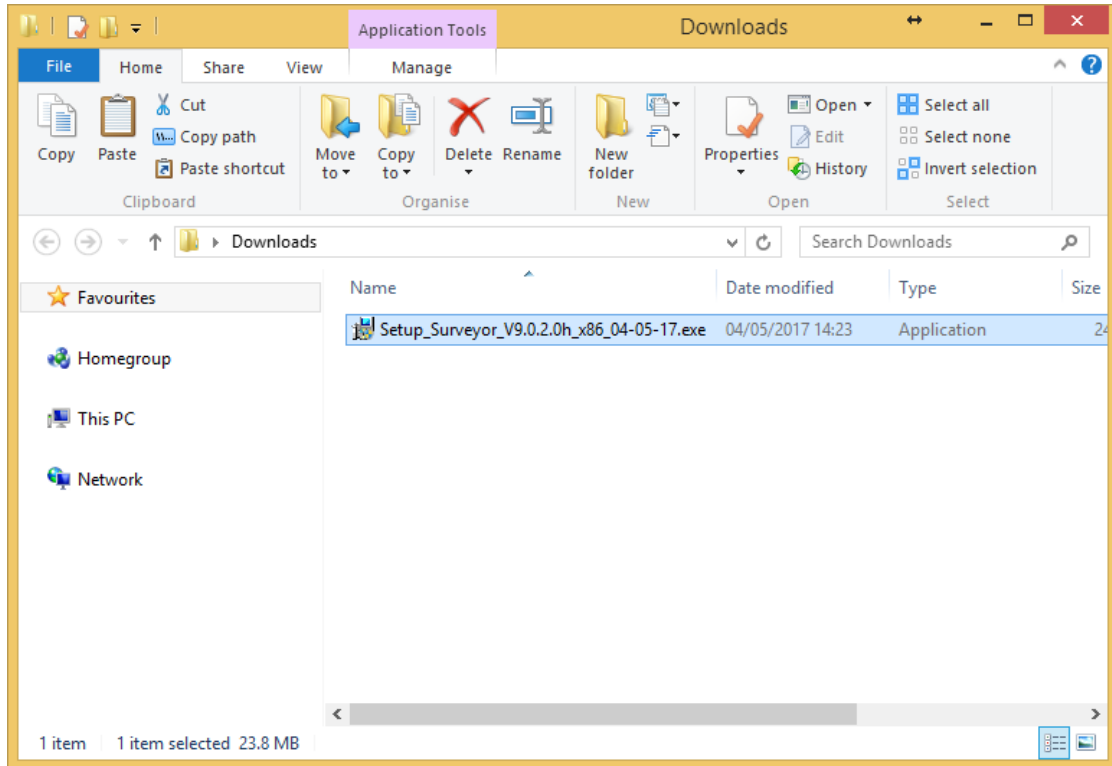


Figure 1 - Surveyor installation executable icon.

3.2 The installation may prompt to allow changes from an unknown publisher, requiring Administrator-level account control. Click Yes to proceed, see Figure 2.

Please contact your onsite IT group to troubleshoot this step.

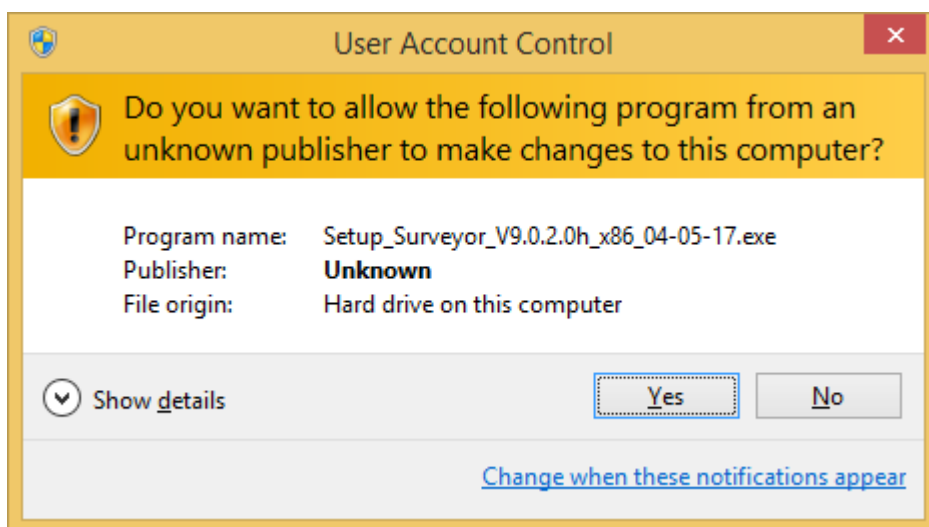


Figure 2 - Allow changes to this computer, click Yes.

3.3 Click the checkbox for the intended camera device manufacturer to be used in Surveyor.

If multiple cameras from different manufacturers are to be used you can select more than one item here. After Surveyor is installed you can switch between camera devices using Image menu > Select Input Device.

Please ensure the appropriate drivers have been installed from the camera manufacturer first. Read section 2 of this guide *Prerequisite Installations* for more details.

Click *Install* to begin the installation process, see Figure 3.

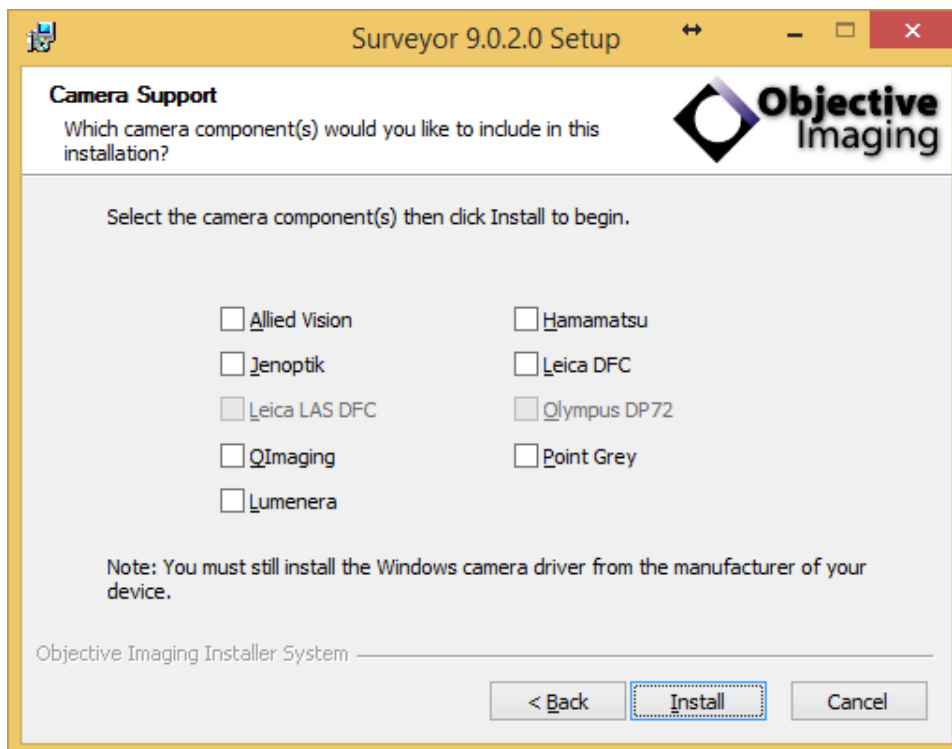


Figure 3 - Click one or more checkboxes and press Install to continue.

3.4 The installation will proceed and the green progress will increment. This may take a few minutes to complete. Once finished, the *Next* button will become available, see Figure 4.

Click *Next* to continue.

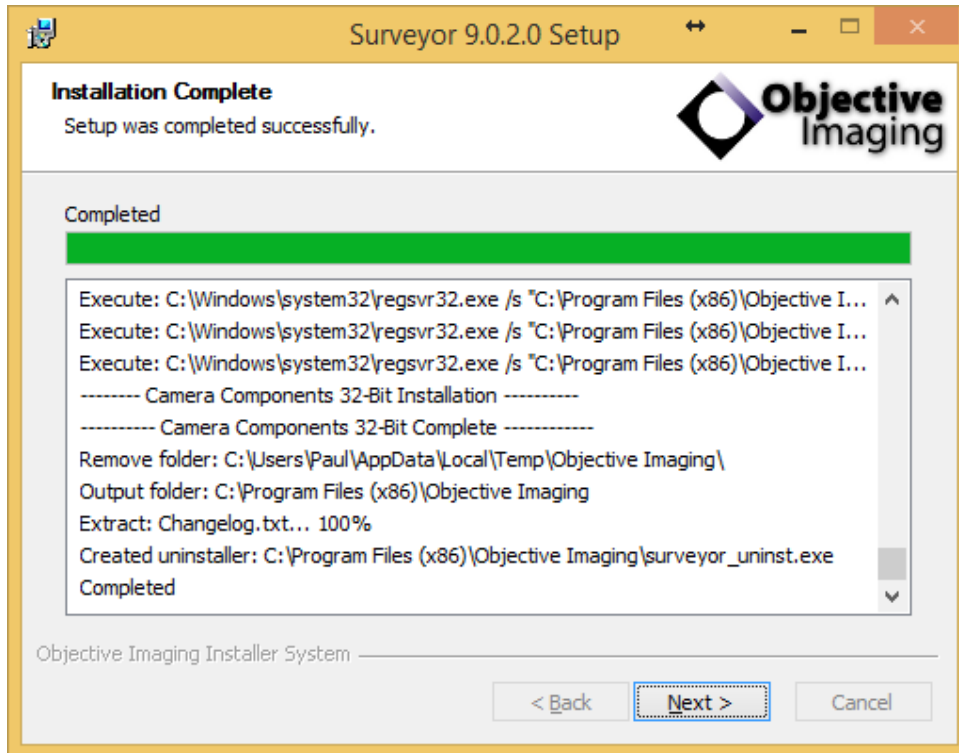


Figure 4 - Installation complete, click Next to continue.

3.5 Additional tasks can be performed to create shortcut icons for the Surveyor application, see Figure 5.

Note that Start menu items for Surveyor are automatically generated and are available in a Start menu folder titled *Objective Imaging*.

Select desired shortcuts and click *Next* to proceed.

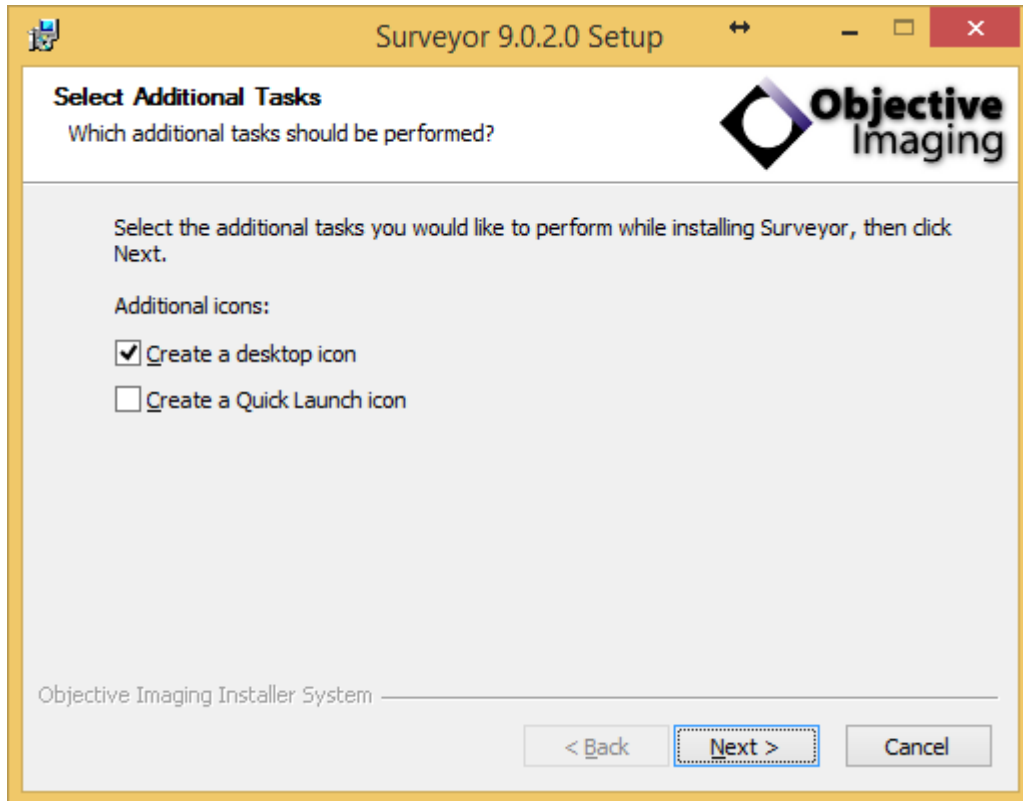


Figure 5 - Select any shortcuts and click Next.

- 3.6 The Surveyor software installation is now completed, please click Finish to close the installation process. See Figure 6.

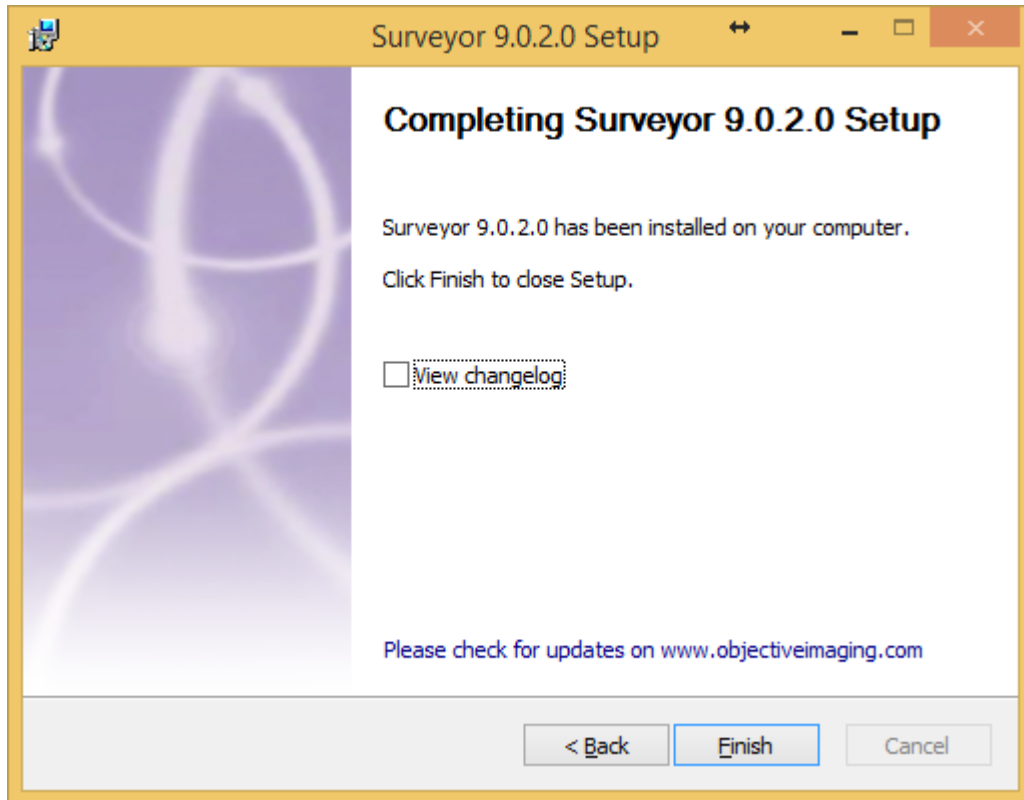


Figure 6 - Click Finish to exit.

## 4 Troubleshooting

---

Please consult your systems integrator or dealer for assistance with the installation and configuration of Surveyor software.